

Corotop Metal



Three-layer highly permeable roofing underlayment

Product is made of the three-layer Corotop membrane and a drainage mat with specially designed weave placed from the external side. The drainage mat provides distance between used metal sheets and the membrane creating a durable and effective roof coverage system. The membrane is resistant to influence of high temperatures and UV-rays. It ensures optimal ventilation as well as roof coverage's vapour permeability at the same time. Available with adhesive strips.

Advantages

- ✓ protects roof steel sheets against corrosion
- ✓ suppresses sounds of atmospheric precipitation and provides great acoustics
- ✓ guarantees roof's ventilation in a metal sheets roof coverage
- ✓ a special drainage mat prevents a roof membrane from overheating
- ✓ easy in application



Application

- ✓ under roof coverage from flat metal sheets placed on both ventilated and not ventilated boarded roofs
- ✓ on slope roofs covered with flat metal sheets
- ✓ recommended under any types of standing seam or overlap steel sheets



High vapour permeability



Double layer construction



Energy saving



Conformité Européenne

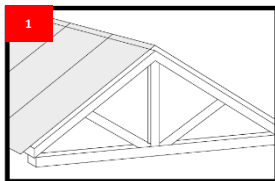
Characteristics

| | |
|---------------------------------|---------------------------|
| Material | polypropylene |
| Number of layers | 2 |
| Mass per unit area | 440 g/m ² ± 4% |
| Colour | black, white |
| Width | 1,5 m |
| Length | 25 m |
| Reaction on fire | class E |
| Resistance to water penetration | class W1 |
| Water vapor diffusion (Sd) | 0,02 m |
| Tensile strength (along) | 320 N / 50 mm |
| Tensile strength (across) | 200 N / 50 mm |
| Elongation (along) | 75 % |
| Elongation (across) | 100 % |

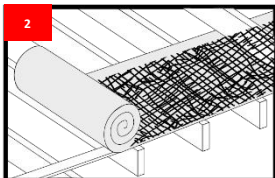
| | |
|--------------------------------|------------------|
| Tear resistance MD (along) | 210 N |
| Tear resistance CD (across) | 270 N |
| Flexibility at low temperature | ≥ -40°C |
| Alignment | requirements met |
| Stability of dimensions | < 2% |
| Temperature resistance | -40 to +80°C |

Meet the requirements: EN 13859-1:2010, EN 13859-2:2010

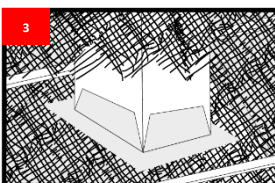
Installation



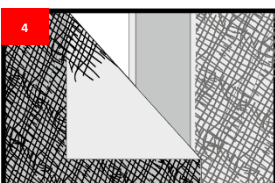
Corotop Metal Membrane is designed for roofs with a minimum angle of slope 11 °, under the roof covering made of flat sheets.



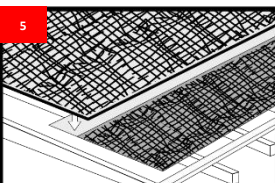
The membrane must be unfolded in parallel to the eaves, with the drainage polypropylene mat upwards. The membrane has an overlapping strip with a width of 10 cm with the drainage polypropylene mat removed, which from the side of the roof ridge should always be nailed.



Drainage polypropylene mat must be removed when finishing e.g. the roof ridge, chimney, etc. In the transition areas, where the structural separation layer is not required, use the Corotop Strong membrane - a carrier film of membrane Corotop Metal.



To provide a proper installation of membrane and its tightness on the roof and to bond overlays, use double-sided tape Corotop Mix



Other tapes of membrane should be laid on the overlays left so as to provide a good drainage of water in the direction of eaves, thanks to a tight membrane structure, it is possible to use standard nails and staples.

Packaging

| | |
|--|--------------------|
| Rolls/square per pallet (rol/m ²): | 8/ 300 |
| Pallet dimension: length × width × height (m): | 1,20 x 0,80 x 1,60 |

Storage

The rolls should be stored in an upright position under cover, ventilated, free from moisture place. Protect from chemical detergents, high temperatures and sunlight, as they are diminishing technical parameters of the material or cause permanent damage. The rolls must be transported in covered means of transport, protected from damage.

The information contained in this data sheet, particularly recommendations regarding the manner and conditions of application as well as the scope of use of the product, have been developed based on our experience, our best knowledge and in good faith. Apart from the information given in this data sheet, health and safety regulations, etc. must be observed. This technical data sheet supersedes all previous versions applicable to this product.